

# MONTHLY MEMBERSHIP PROGRESS REPORT

District 1 J

Results as of: 5/31/2026

GMT:

LOCATION ILLINOIS

GMT CA

Clubs			
RESULTS FOR 2025-2026			
QUARTER	NEW CLUB GOAL	NEW CLUBS	DROPPED CLUBS
JULY/AUG/SEPT	0	0	0
OCT/NOV/DEC	1	0	0
JAN/FEB/MAR	0	0	0
APR/MAY/JUNE	0	0	0

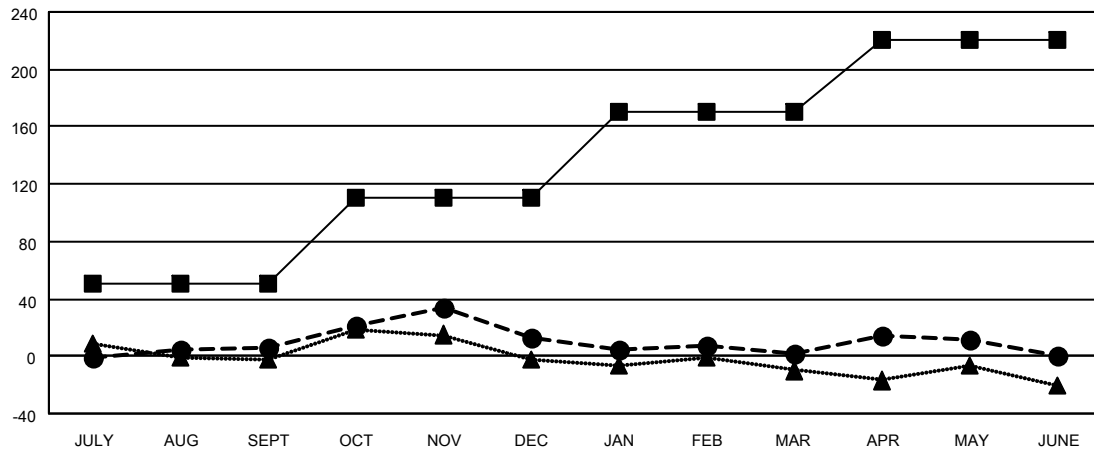
Members			
RESULTS FOR 2025-2026			
QUARTER	MEMBER GROWTH NET GOAL	MEMBER GROWTH ACTUAL	DROPPED MEMBERS ACTUAL (including transfers)
JULY/AUG/SEPT	50	39	31
OCT/NOV/DEC	60	58	49
JAN/FEB/MAR	60	34	40
APR/MAY/JUNE	50	40	26

GOALS AND ACTUAL NEW CLUBS CUMULATIVE



- - CURRENT YEAR GOALS FOR NEW CLUBS
- - CURRENT YEAR ACTUAL NEW CLUBS
- ▲ - LAST YEAR ACTUAL NEW CLUBS

GOALS AND ACTUAL MEMBERS CUMULATIVE



- - MEMBER GROWTH NET GOAL
- - MEMBER GROWTH ACTUAL
- ▲ - LAST YEAR MEMBERSHIP ACTUAL

DROPPED CLUBS: 0	37 CLUBS OF 54 ADDED 1 OR MORE NEW MEMBERS	<b>GENDER DISTRIBUTION</b>
<b>DROPPED MEMBERS</b>	<a href="#">CLICK HERE FOR CUMULATIVE MEMBERSHIP DATA</a>	MALE 1,471 (69.81%)
		FEMALE 634 (30.09%)
DECEASED 19		TOTAL FAMILY UNIT MEMBERS 277
CLUB CANCELLED 0		FAMILY MEMBERS PAYING HALF DUES 145
OTHER 125		
<b>TOTAL 144</b>		